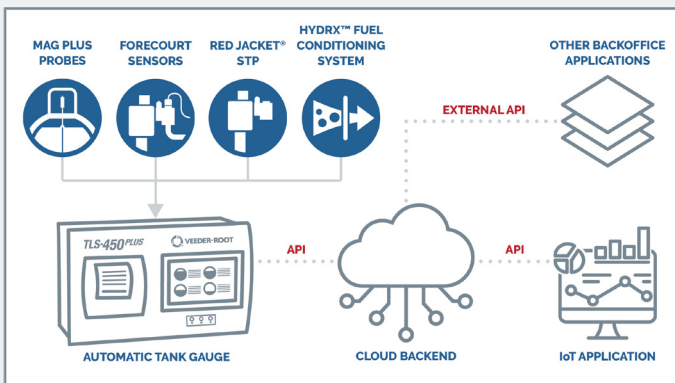
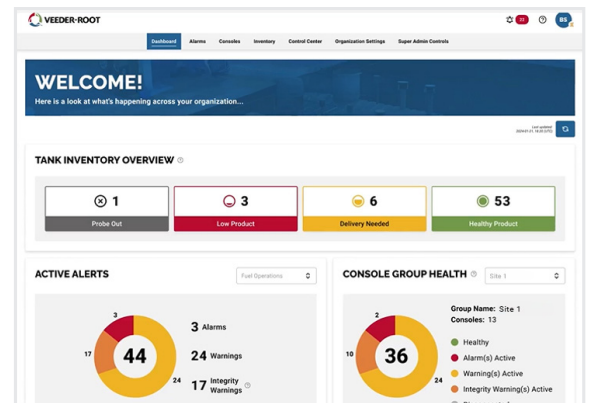


# ATG Dashboard

Providing remote monitoring intelligence across your fueling network

The **ATG (Automatic Tank Gauge) Dashboard** provides a consolidated view of your ATG network, with inventory, alarms, advanced alarm diagnostics, remote upgrades, and actionable insights. The real-time data enables maintenance workflow optimization and maximum site uptime to keep fuel flowing.

- **Enhanced Alarm Management** remotely prioritizes and acts on alarms and warnings across the entire ATG network and connected devices.
- **Predictive Maintenance** anticipates equipment malfunctions and notifies user of potential end-of-life situations.
- **ATG Network Management** performs remote software upgrades and backups, in addition to notifying the user of configuration changes.
- **Real-time Fuel Visibility** monitors tank inventories at the network level and automates fuel deliveries.
- **Real-time Data via APIs** integrates ATG data with other back-office applications.



## Streamlined Platform

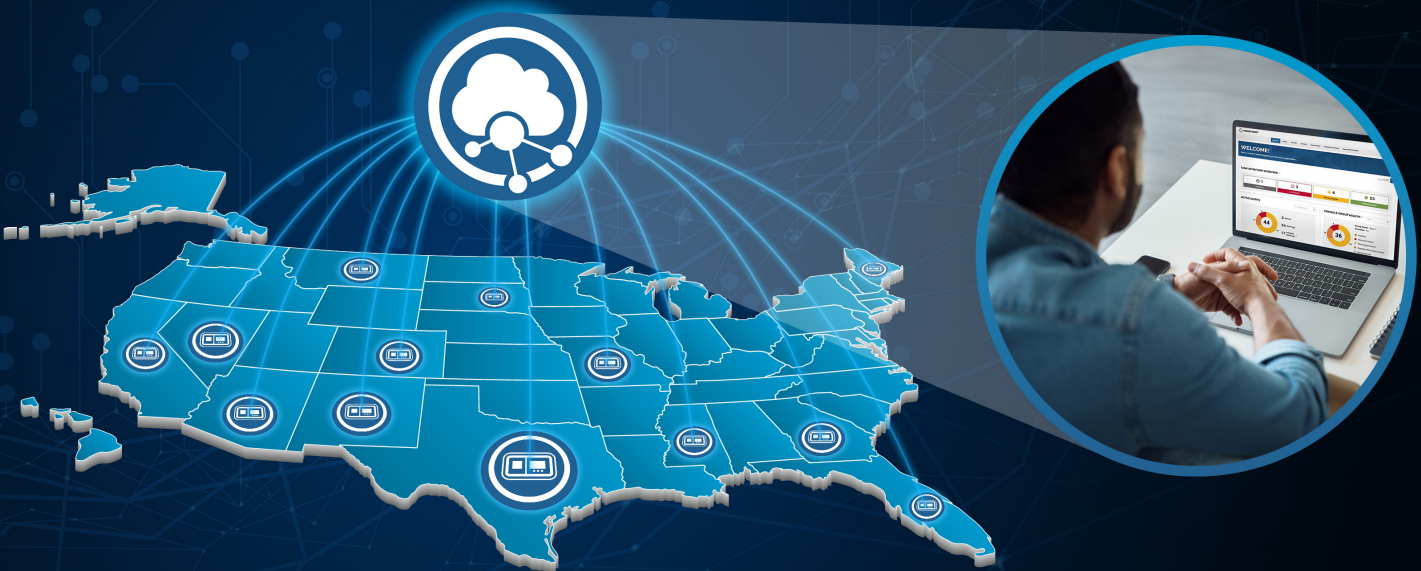
One platform, one single sign-on for a unified real-time view of devices across the site network.

## Security & Reliability

Industry-leading data security practices, redundant design, 24x7 monitoring.

## API Compatibility

Interoperability with other systems through APIs.



### ▶ OPERATE AT PEAK EFFICIENCY

- ✓ Resolve critical alarms quickly by grouping, prioritizing, and notifying the right teams.
- ✓ Minimize emergency truck rolls by proactively resolving liquid sensor issues.
- ✓ Minimize truck rolls and stay secure by remotely updating and managing ATG software.
- ✓ Minimize compliance fines by being notified and reverting critical configuration changes (Pressurized Line Leak Detection (PLLD) settings).
- ✓ Minimize run outs by complete visibility into tank inventory and automate fuel dispatch through API integrations and notifications.

#### REMOTE SOFTWARE UPDATES

**CONSOLE UPDATE** ×

You are requesting updates for the following console(s). It will be upgraded to the latest available version. If you choose to update now, a request will be sent and, if available for updating, the console(s) will initiate the process. Alternatively, you can schedule the update for a later date.

You are about to update the following console(s):

Console Name	Console ID	Auto Activate	Console Version
Site Number: 650	012567	Enabled	10.J21354
Site Number: 700	789856	Disabled	10.J21351
Site Number: 800	789101	Enabled	10.J2134.2

You can perform this task now, or schedule it to happen at a later time.

Updating to version:

Beta 12.Z7891.2

CANCEL
UPDATE NOW
SCHEDULE FOR LATER

### KEY BENEFITS



#### REMOTE CONNECTIVITY

The ATG Dashboard and API establish a direct connection between the ATG and the Hub, offering you a real-time link to your sites from any location.



#### ENHANCED SECURITY

Veeder-Root prioritizes the security and integrity of your data 24/7, so you have peace of mind that it is protected.



#### EXPANDED CAPABILITIES

The ATG Dashboard and API enable predictive maintenance, enhanced alarm management, remote software upgrades, and offer additional features; leading to reduced downtime and maximized cost savings.



#### LOWER COST OF OWNERSHIP

With the ATG Dashboard and API, proactively address critical issues before they impact your bottom line.



### Meet the Hub

One cloud-based platform to streamline site management, the Hub provides real-time device connectivity via Application Programming Interfaces (APIs) and dashboards empowering device control and optimization with a simple, consistent customer experience.